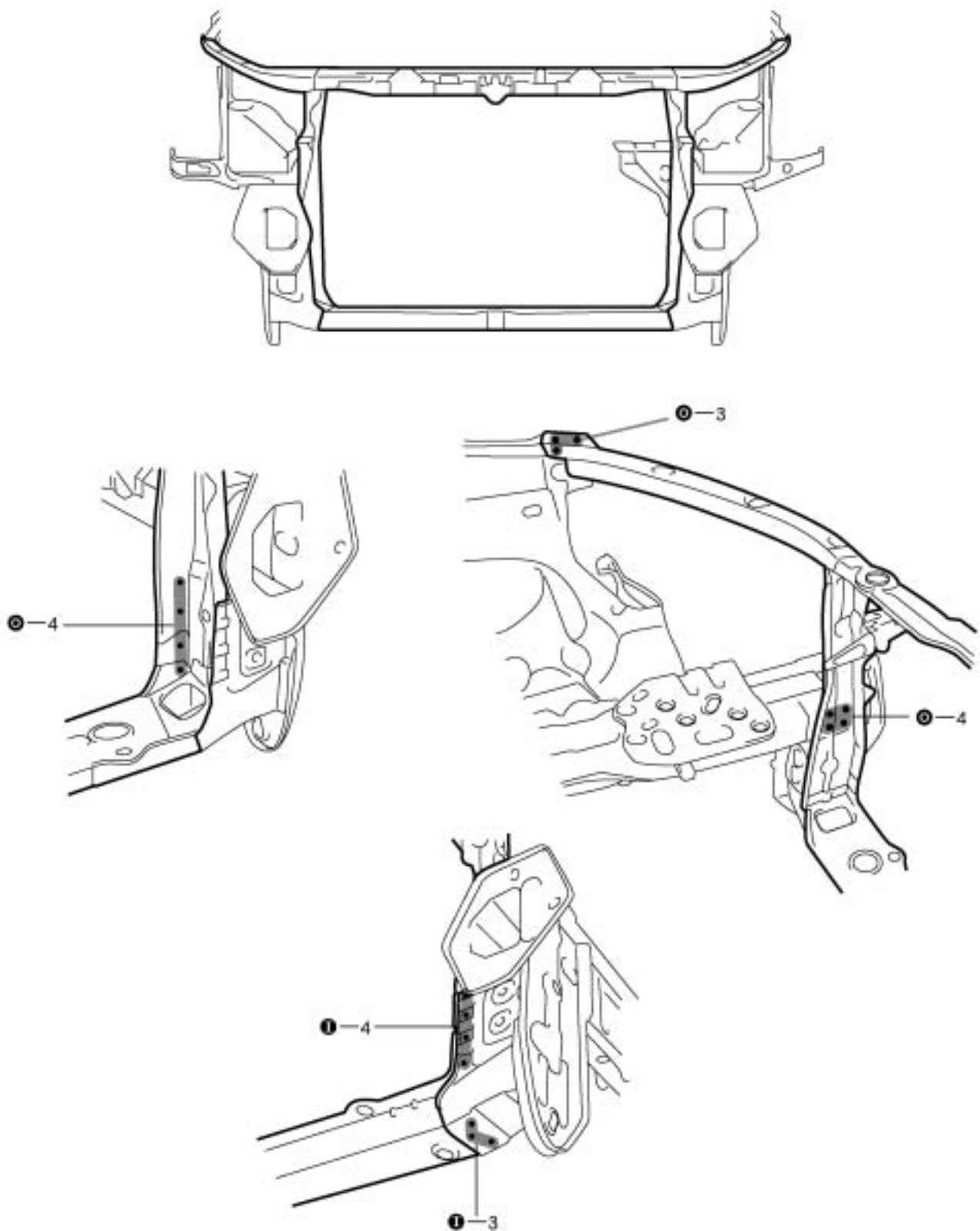


RADIATOR SUPPORT (ASSY) REPLACEMENT

1. REMOVE RADIATOR SUPPORT

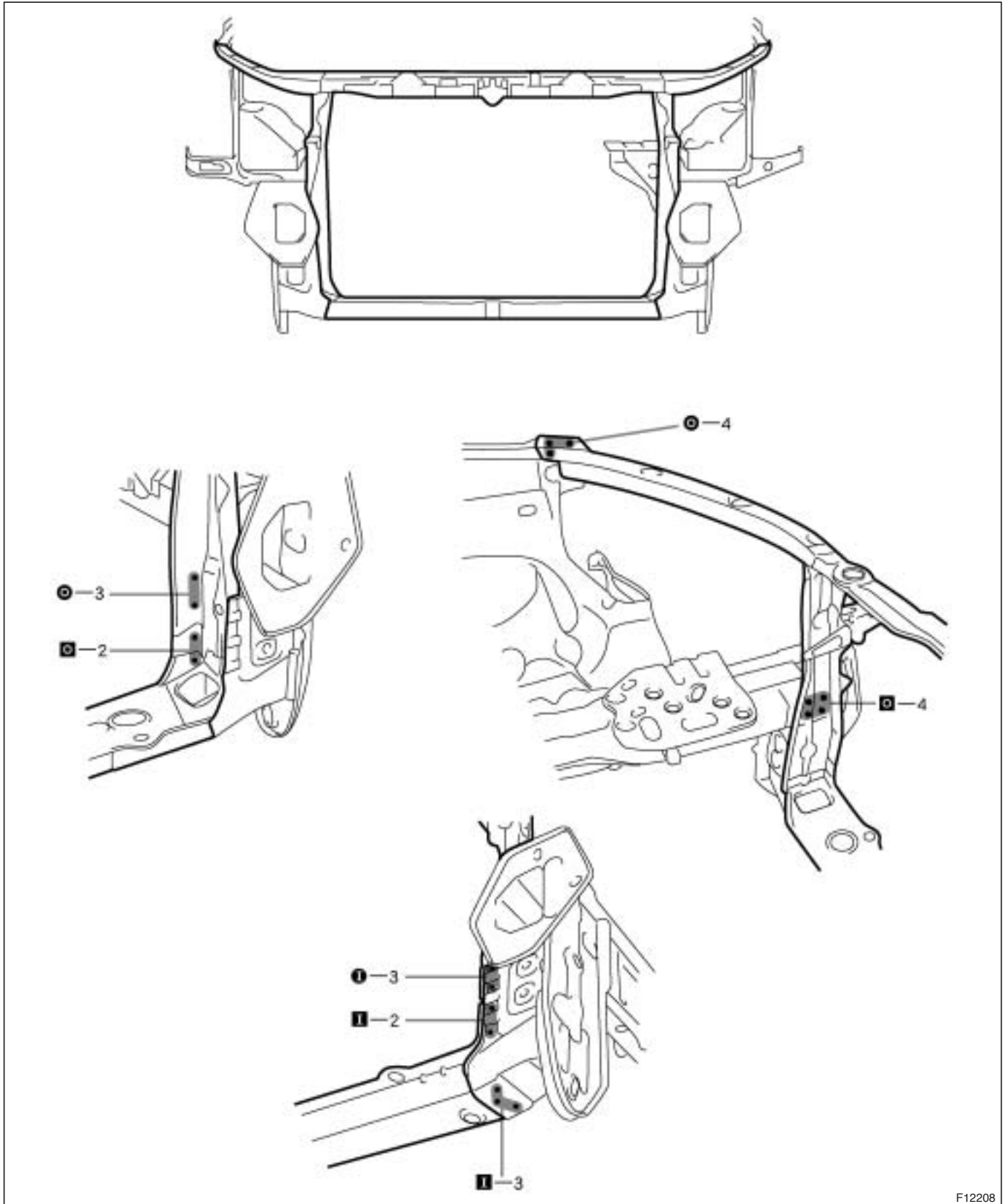


2. INSTALL RADIATOR SUPPORT

- (a) Temporarily install the new parts and measure each part in accordance with the body dimension diagram.

HINT:

First install the hood lock support.



3. MEASURING THE ENGINE COMPARTMENT DIMENSIONS ([See page BP-94](#))
4. MEASURING THE UNDER BODY DIMENSIONS ([See page BP-94](#))
5. APPLYING ANTI-RUST AGENT
 - (a) After applying the top coat layer, apply the anti-rust agent to the inside of the necked section structural weld spots.